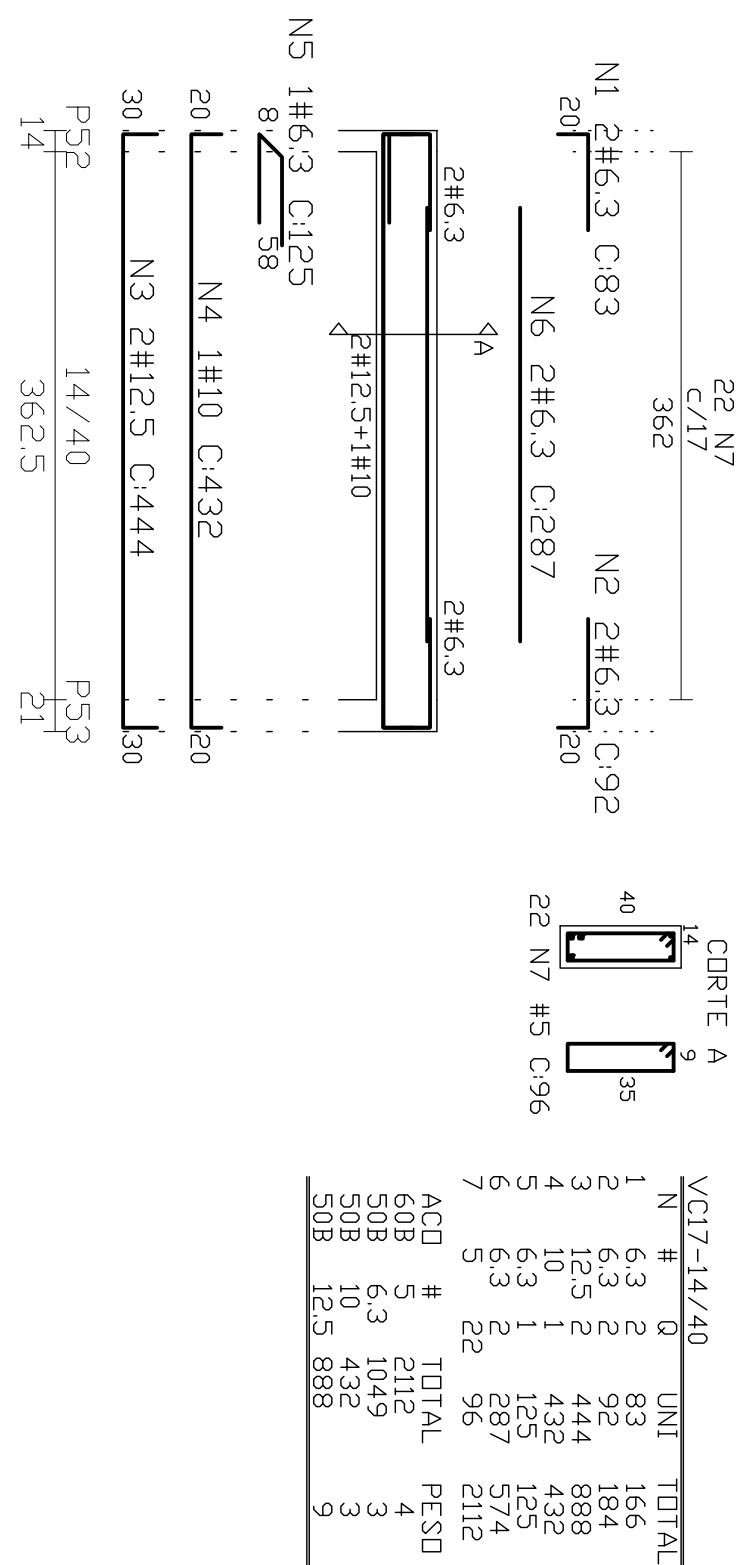
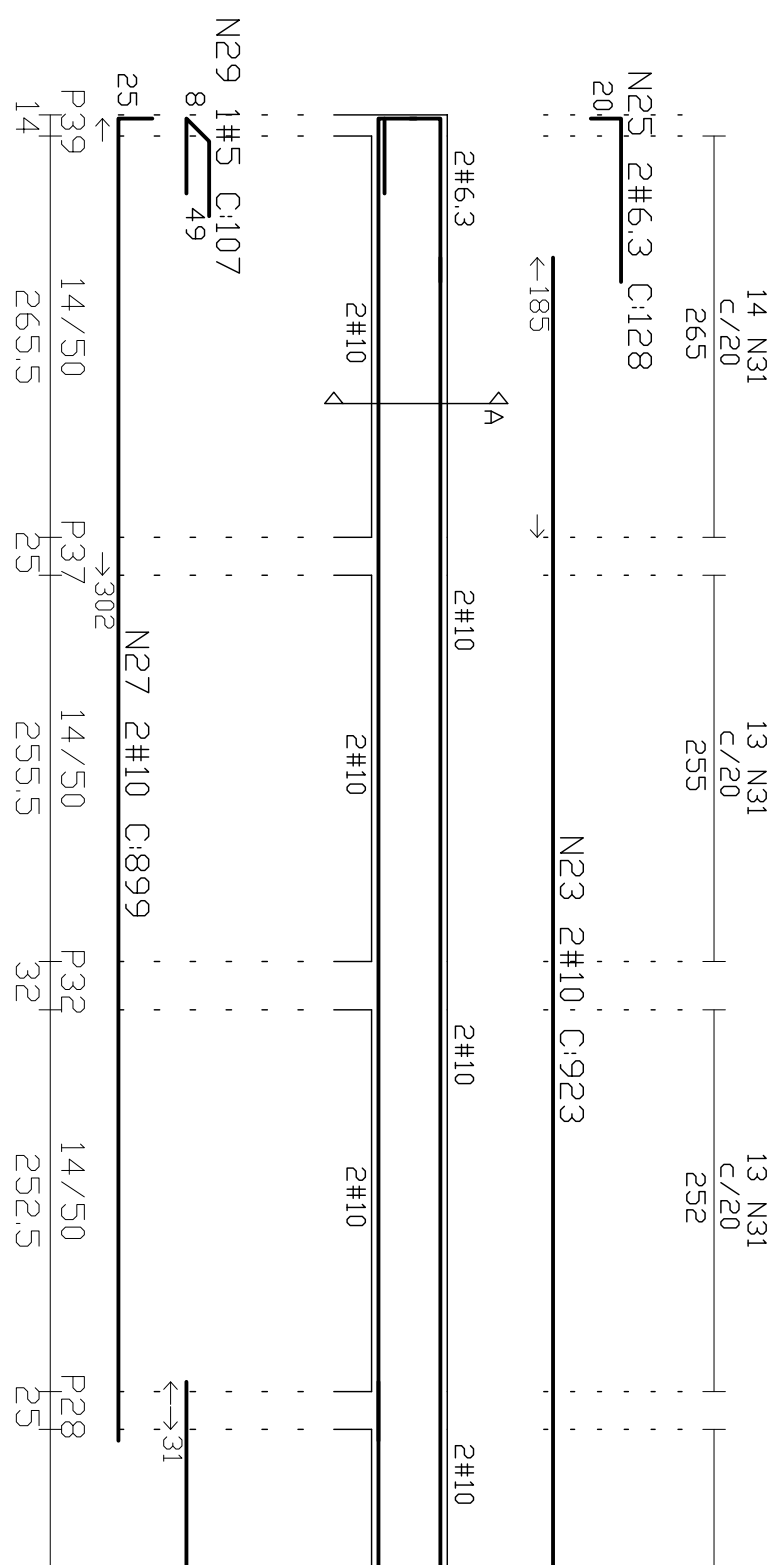


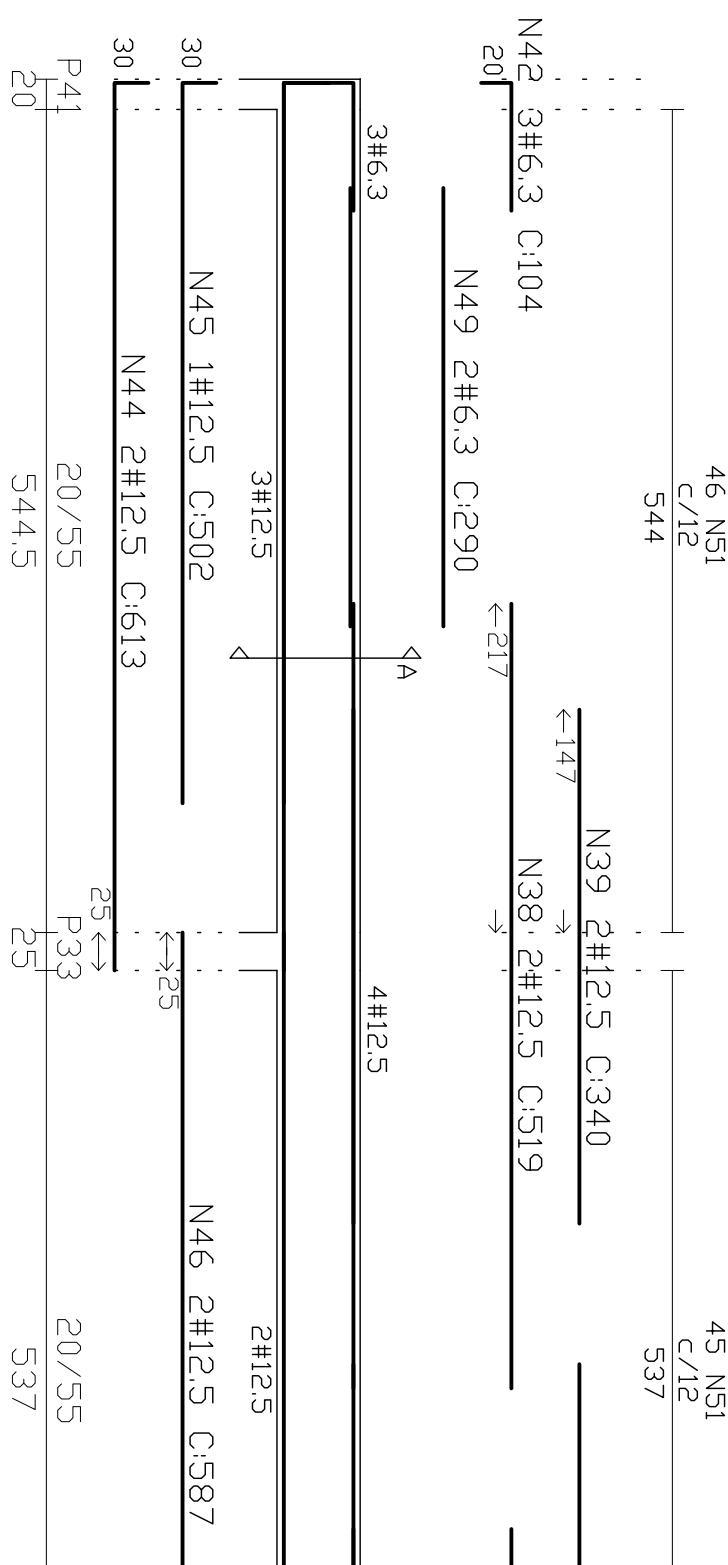
VC17-14/40



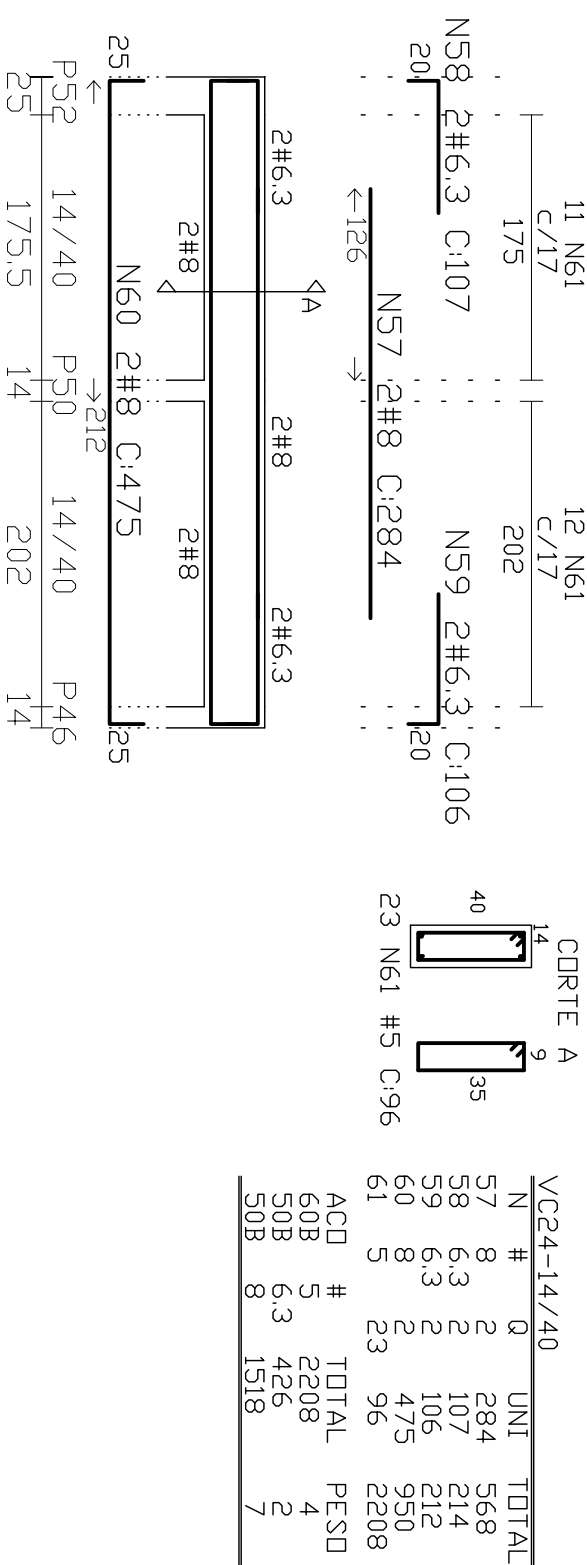
VC19-14/50



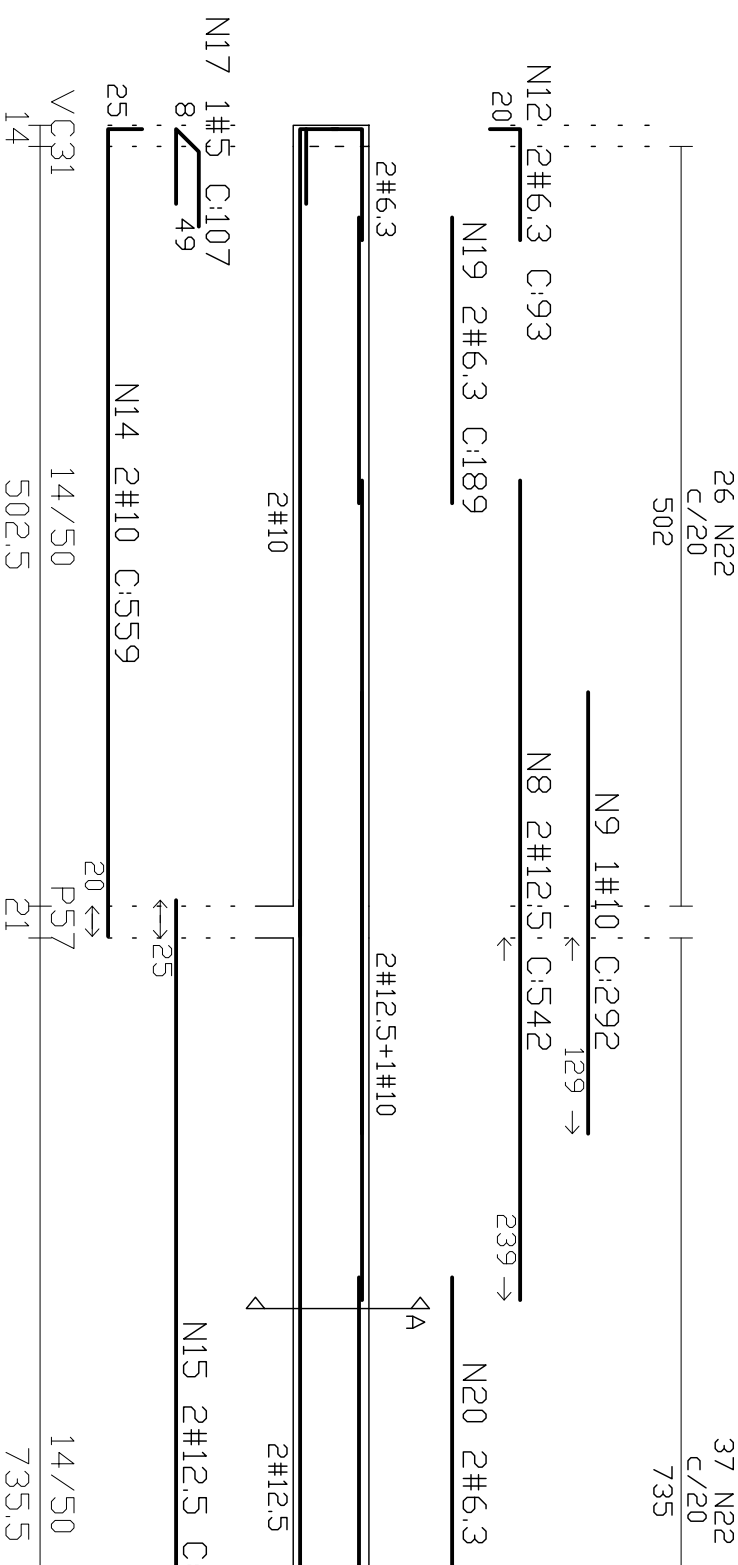
VC22-20/55



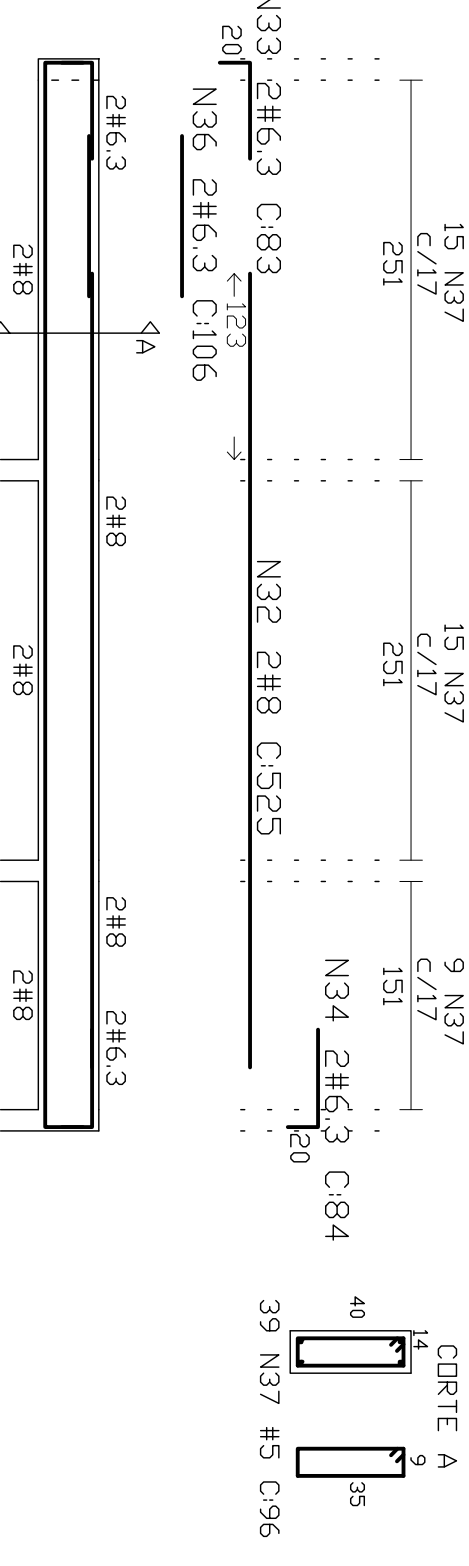
VC24-14/40



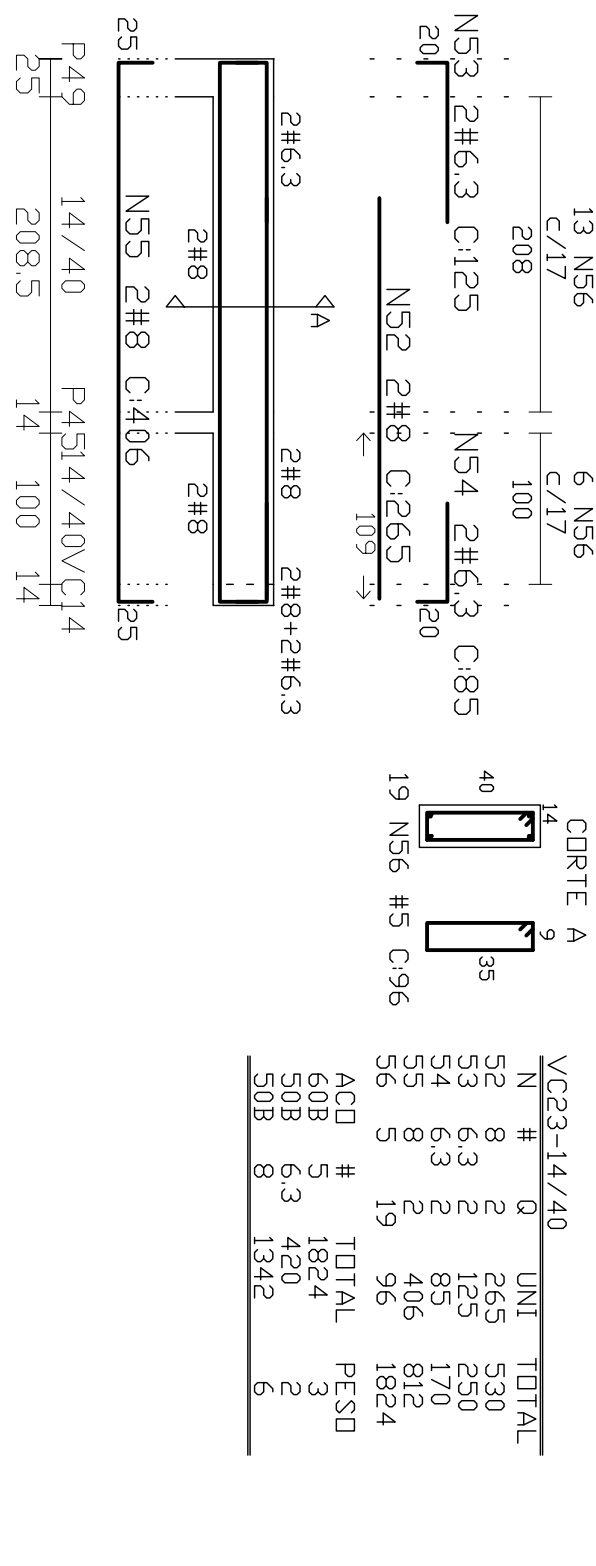
VC18-14/50



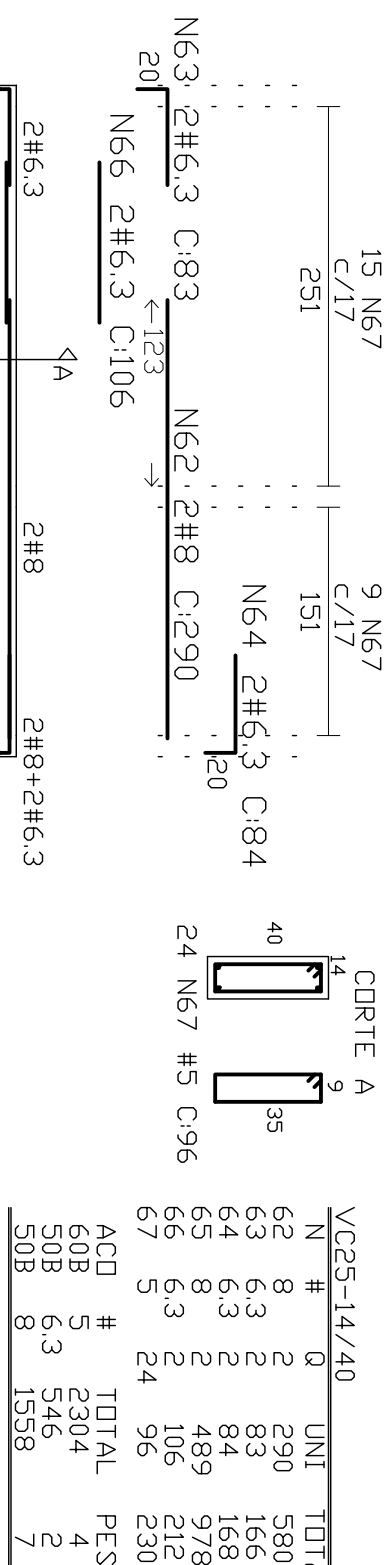
VC21-14/40



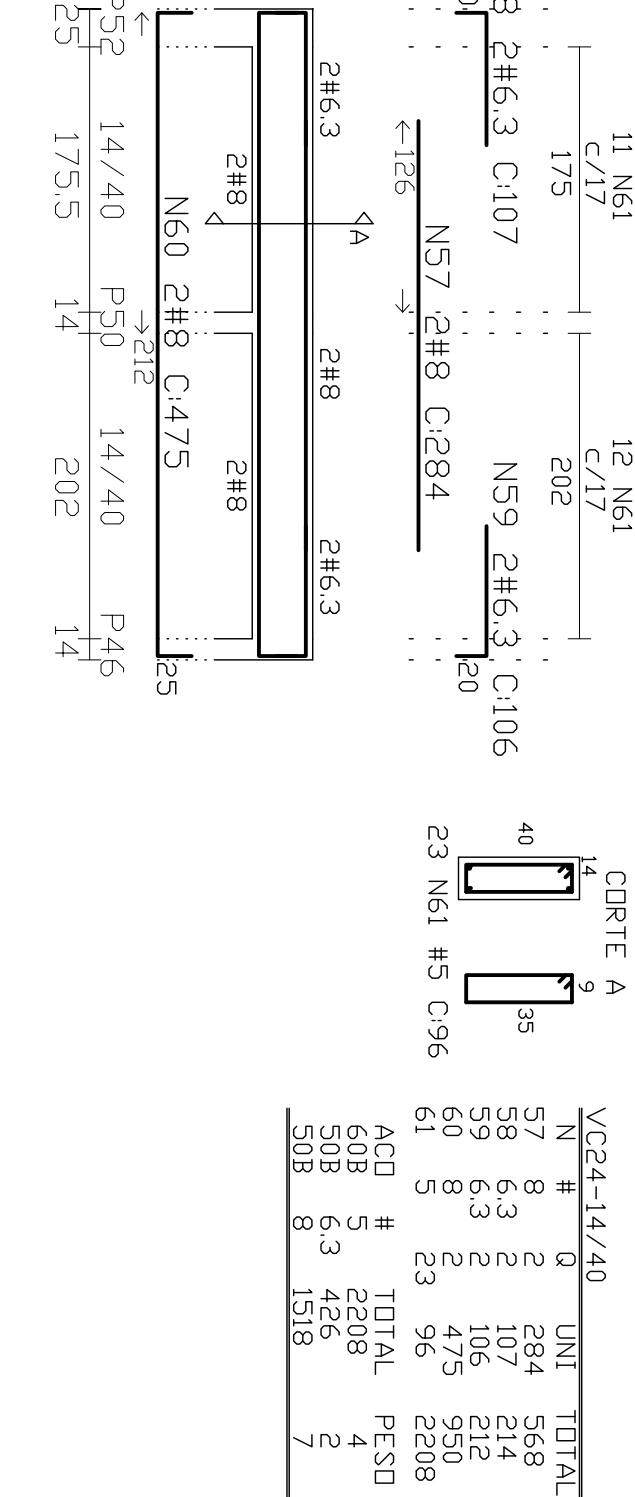
VC23-14/40



VC25-14/40



VC24-14/40



Notas:

- 01 NBR6118:2003 – Classe de Agressividade Ambiental = II – ambiente interno protegido.
02 NBR6118:2003 – Concreto com $f_{ck}=25MPa$ – Aço CA-50 e CA-60.
03 NBR6118:2003 – Cobrimentos: 5,0cm(Estacas e Blocos), 3,0cm (Vigas baldrame e de travamento)
04 Unidades: diâmetro do aço em milímetro; espacamento e comprimento em metros

OBSERVAÇÃO:

EXECUTAR VERGAS E CONTRAVERGAS EM CONCRETO ARMADO fck 25 MPa
EM TODOS OS VÃOS DE JANELAS E PORTAS (VER CADERNO DE ESPECIFICAÇÕES)

3			
2			
1			
RENÍCIO	OBSERVAÇÃO	VISTO	DATA

PREFEITURA MUNICIPAL DE BANDEIRANTES - PR.

USAR: PROJETO ESTRUTURAL PARA UM CENTRO DE FISIOTERAPIA
RUA SÃO PAULO, ESQUINA COM A RUA PREFEITO RAFAEL ANTONACCI

CONTEÚDO: DETALHAMENTO VIGAS DA COBERTURA



09